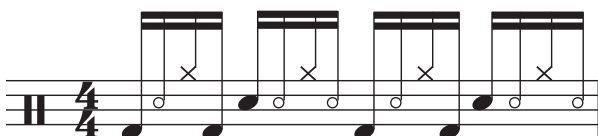
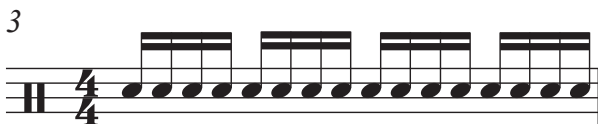
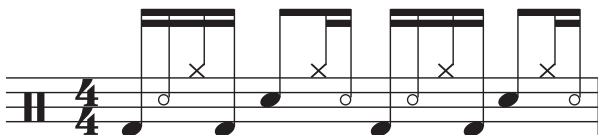
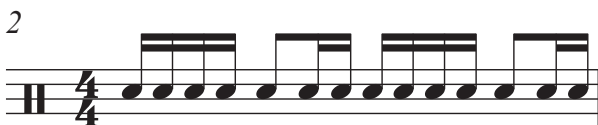


Linear Grooves

Linear grooves are patterns where only one hand or foot plays on each beat (as opposed to "standard" grooves where the bass and snare usually play against a constant hi-hat pattern).

Linear grooves can be developed by first working out a rhythm using only one instrument (e.g. the snare) and then moving individual beats onto the hi-hats, bass etc (called "orchestration"). Each groove here is shown with the initial basic snare pattern, together with one possible orchestration. Remember however that there are almost limitless possible grooves that can be developed from any one initial basic pattern. Have fun experimenting!



For more lessons, videos and information, visit www.back2thebeat.co.uk